

**CLAVOS  
ENDOMEDULARES**

**FÉMUR ANTERÓGRADO**



**BT BIOTROM**  
PROTESIS E IMPLANTES

Ø10 (320mm a 420mm)

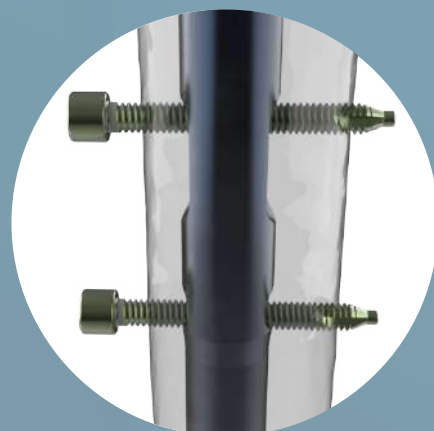
Ø11 (320mm a 440mm)

Ø12 (320mm a 440mm)

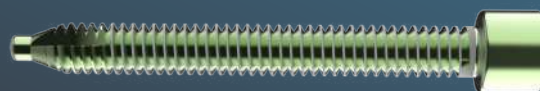
de 20 en 20

TITANIO Y ACERO QUIRÚRGICO

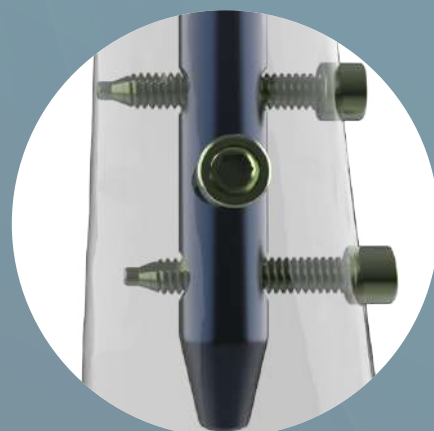
**ESPECIFICACIONES**



**Cerrojo**



Ø5,0mm (30mm a 70mm) de 5 en 5



**Tornillo compresión**



**End cap**



[www.biotrom.com.ar](http://www.biotrom.com.ar)